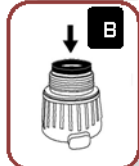


One-time Installation:

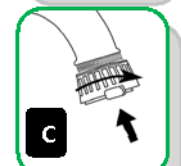
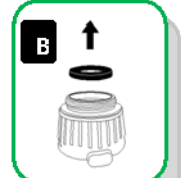
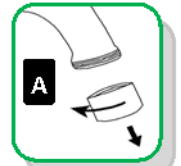
Faucet with INTERNAL Thread Aerator

- A. Remove existing aerator by turning counter clockwise.
- B. Make sure thin AND thick washers are inside aerator.
- C. Install aerator onto faucet by turning clockwise.



Faucet with EXTERNAL Thread Aerator

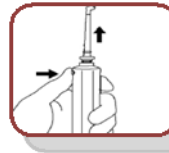
- A. Remove existing aerator by turning counter clockwise.
- B. Remove thick washer from enclosed aerator.
- C. Install aerator onto faucet by turning clockwise.



See easy installation video at <http://bit.ly/iuZeYx>

Usage:

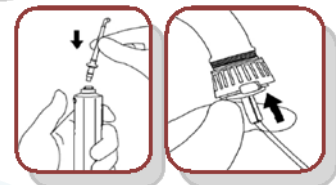
- ◆ Insert ProFloss® Waterflosser pick into handle base until you hear a click.
- ◆ Push hose onto aerator until you hear a click. Turn on water.



Register your purchase at www.pro-floss.com/service/product-registration/

Storage:

- ◆ Turn off water. Press the ProFloss® Waterflosser quick release button on side of handle.
- ◆ Press the hose release button on side of aerator. Store hose, handle and pick in pouch.



Use Profloss® Waterflosser in conjunction with your daily brushing and flossing for superior oral care.

Getting Started:

- ◆ When using ProFloss® Waterflosser for the first time, set water control dial to 1. Adjust to your comfort thereafter.
- ◆ Lean low over sink and place pick in mouth before turning on water and turn off water before removing pick from mouth.
- ◆ Close lips slightly around pick to reduce splashing yet allow water to flow from mouth into sink.
- ◆ Direct water stream at 90° angle to gumline. Move pick along gumline and pause between teeth.
- ◆ If you experience difficulty attaching the hose base to aerator or waterflosser, lubricate with a small amount of petroleum jelly.
- ◆ Drain water from hose before storing in pouch.

Safeguards:

- ◆ Avoid directing ProFloss® Waterflosser stream under the tongue or into the nose, ear and other delicate areas.
- ◆ Remove all oral jewelry before use. Do not use if you have an open wound on tongue.
- ◆ Instruct special needs adults and children in the proper use of ProFloss® Waterflosser.



One Year Warranty

Idea Factory, Inc. warrants this product shall be free of defects in assembly under normal use when properly installed and maintained in accordance with instructions. This warranty does not include damage to the product resulting from misuse, product alteration or improper care and maintenance. This warranty gives you specific legal rights, and you may also have rights that vary from state to state.

If the product should become defective, Idea Factory, Inc. will repair it or elect to replace it free of charge. To obtain warranty service, email consumerassist@ideafactoryinc.com or call (800)867-4673. You may be instructed to return defective product, postage prepaid, to:

Consumer Assistance • Idea Factory, Inc. • N56 W16865 Ridgewood Dr., Suite 200 • Menomonee Falls, WI 53051-5656

Include a return shipping address inside the package. Idea Factory, Inc., will return your product postage prepaid. Allow 2 weeks for delivery. Not responsible for illegible, lost or misdirected mail. Claims of non-receipt will require you to provide a

Questions or comments? Call (800)867-4673 or (262)703-0011.
Or visit www.pro-floss.com/profloss-water-flosser/

